

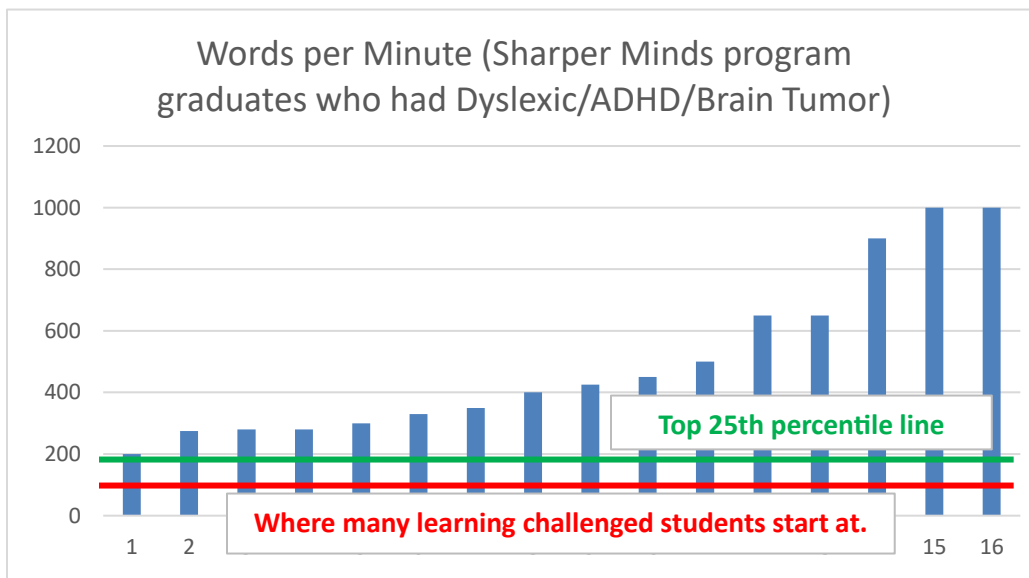
Sharper Minds®

Enhance Mental Performance ♦ Overcome ADD/ADHD, Dyslexia and Learning Challenges
866-HELP-A.D.D. ♦ www.SharperMinds.net

Dear Principal, Director or Special Education Coordinator,

As an educator, you know how hard some **students struggle with learning, reading and attention skills**. Most of those read slowly, often with poor comprehension. They take longer to do tasks, require more of a teacher's time and attention, and may disrupt the class. There are **additional costs to the school** such as IEPs, 504s, special education services, accommodations, more involved parent-teacher conferences, etc. There may be **emotional and social costs** as well, with the student often being called derogatory terms and many struggling with social and athletic skills.

There is a **proven solution** to help most of these students. Take a look at the graph below of the reading speeds of the 16 most recent Sharper Minds® program graduates. All initially had some processing difficulty whether severe dyslexia, ADHD, developmental delays, etc. One had a brain tumor in his visual cortex and was unable to read. By building a visual cortex around the tumor, he was able to read at 425 wpm!



Since December of 1999, the founders of Sharper Minds® through various entities have served over 2,000 children and adults, helping them develop their brains **often to way above normal**. I like to call it the **Einstein effect** (based upon neuroscience). **Think Better – Live Better!**

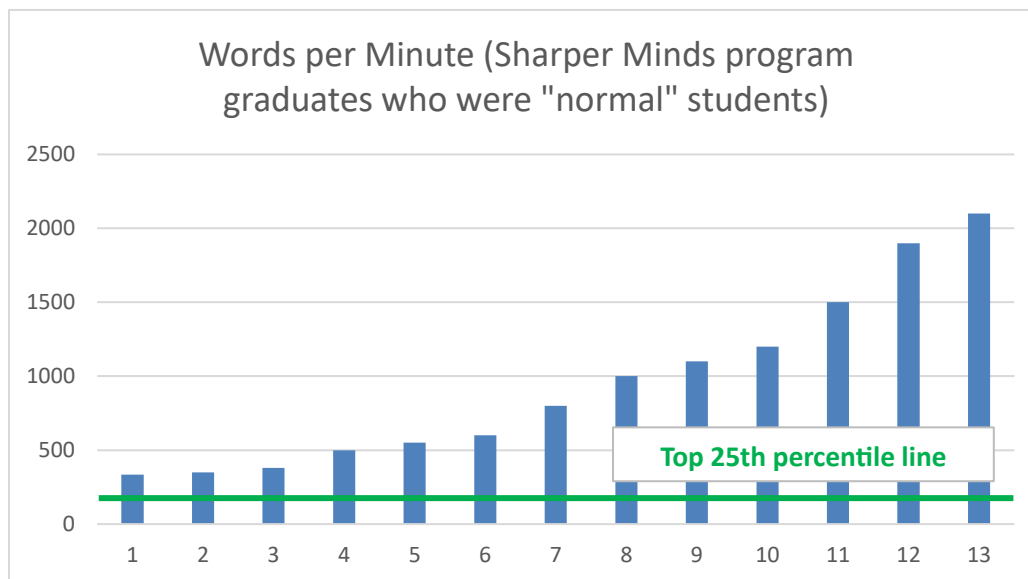
According to the standardized Weschler Individual Achievement Test (WIAT) for Reading (Speed and Comprehension), the **top 25th percentile of public school students** have reading speeds between 157+ words per minute (wpm) at 4th grade to 219+ wpm as a junior in high school (let's use the average of 188 wpm for **the green line** in the above graph). Struggling students often read just a fraction of that, from zero to 80-120 wpm (**the red line**) with poor comprehension. They have to read and reread a passage to gain understanding.

(over please)

Can you imagine such a struggling student increasing their brain performance so that they could read 250 wpm (my minimum expectation), 500 wpm, or even over 1000 wpm with good comprehension? It's a crazy dream, isn't it? Yet, one we've been fulfilling for over 20 years. By the way, the average of the above is around 500 wpm, 5x's faster than for most students with dyslexia.

Normal students can benefit too!

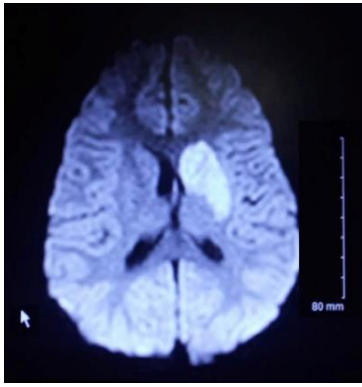
Many parents want to give their children advanced opportunities to benefit them long-term, whether academically, intellectually, athletically, etc. Reading speeds for the most recent 13 "normal" kids (siblings of the aforementioned challenged students) who went through the Sharper Minds program are shown below.



Their average is around 950 wpm! Multiples of the top 25th percentile of students (again **the green line**)! Imagine a 9- or 10-year-old student reading at 1000 wpm (6 of the above 13 earned their membership in our 1000 wpm club). Yes, it is possible! The 1900 wpm student above received a National Merit Scholarship to college. Another student (not shown) who was reading over 1000 wpm at 11 years old, qualified for substantial scholarships, graduated at the top of his major at UTA, became a top programmer at State Farm Insurance, pulled off a complex project that the company 12 times earlier had failed to accomplish, and was promoted to set the strategic goals and processes for ~300 programmers at the company. **Think Better – Live Better!**

How does Sharper Minds accomplish this? Simply, **we focus on developing the brain**, the connectivity between the two hemispheres (called the **Corpus Callosum**) until it is **thicker than normal**, more like the genius Albert Einstein whose brain connectivity was around 60% vs. the typical 20%. In addition, we develop the visual, auditory, sensory-motor cortices, the memory zones and the key mental processes for efficient thinking.

We use **time-efficient and effective exercises** to **stimulate the brain to grow** what has been underdeveloped, missing, latent, damaged, atrophied, etc.



Stroke victim begins a faster recovery

Let me give another example, this one of a student in Thailand that we are working with.

Adela experienced a stroke at 3 years of age (see the white area in the adjacent brain scan image).¹ In spite of therapy and interventions, at 9 years of age she still didn't know her alphabet and of course couldn't read. In just 12 weeks of the Sharper Minds program exercises, she learned her upper- and lowercase alphabets and began to read. After 22 weeks, she is spelling 5-letter words and making progress in school.

There are many more examples on our website at www.SharperMinds.net.

Cognitive Evaluations

Sharper Minds offers **several cognitive evaluation options** (educational style), to meet the needs of the family and/or school, at very competitive fees compared to the norm for this area. In the DFW metroplex, **evaluations are done in the convenience and comfort of the family's home**. Specifics are available on the **Evaluations** page on our website at www.SharperMinds.net. Reports and recommended accommodations are **in plain language** so that parents and educators can easily understand what the student is dealing with and steps they can take.

Sharper Minds brain training program

But more importantly, is what comes afterwards. The Sharper Minds brain training program stimulates neurological development. It **takes consistent effort and time** (11-22 months) and yields **permanent results**, not just in reading speed and comprehension, but the entire brain and person. An earlier study of several hundred graduates of our program showed that on average, **a learning challenged student progressed 3.8 grade levels for every year in our program**.

A 6-year-old moderate functioning autistic boy began the Sharper Minds program in 2006 and completed it. He is now 23 years old, has shed the diagnosis of autism, is a commercial pilot for American Eagle Airlines and recently got married. His mom, a Diamond level distributor with Young Living Essential Oils, and I keep in touch.

Do it once, lasts a lifetime. The program does take time and some financial resources, but the return on investment is magnitudes over doing something less effective.

Affordable for most families

The financial investment is very reasonable. Depending on the program option that is the best fit for the family, expect between \$1k to \$2k for the initial payment to cover the equipment, training materials, sales tax and first month's sessions, then \$185/month thereafter until the program is completed (this covers up to two individuals, more can be added). This is often less than the cost of tutoring. **Each family is guided step-by-step through the entire process**, until they complete / graduate from the program. The

¹ I have permission to share her real name and the image of her brain scan by her mother.

more consistent they are in doing the exercises, the faster they complete the program, the more they save.

As we work with the parents who then work with their children, **the parents should be reasonably disciplined and accountable** for our bi-monthly phone training sessions (the first two sessions are done face-to-face if in the DFW area). We can and do service English-speaking families all around the US and the world, including several currently in Florida, Georgia and the aforementioned Thailand, so distance is not a problem.

What you can do to help families in your school:

- Please **add us to your list of providers** that offer services for the dyslexic, ADHD, high-functioning autistic population. If you have questions about this, reach out to **Dawn Kahlden**, Director of the Office of Disability Services at **Weatherford College** who regularly refers students to us. Her contact information is: **817-598-6350** or dkahlden@wc.edu.
- **Direct families to our website**, www.sharperminds.net (scan the QR code), or
- Have them **call me at 1-866-HELP-A.D.D.** Do encourage them to leave a voicemail and I will personally return their phone call.



Inservice for your staff or a presentation to families

If you would appreciate an Inservice for your staff or a presentation for families to help them understand the brain, how it works and how to overcome cognitive challenges, please let me know. There currently is no charge for inservices/presentations in the DFW metroplex. Our goal is to help as many kids as possible reach their full potential.

Just think what a positive impact that you can make in the lives of your struggling students.

Need References?

If you would like to talk with some families that have gone through the program, ask for some references. Many are happy to talk about their experience. Check out the long **Testimonials** section of our website.

You can reach me at 866-HELP-A.D.D. (866-435-7233). Kindly leave a message if voicemail should pick up.

Let me know how we can work together to help your school and students.

With prayers for a successful school year,


Ed R. Meelhuysen

P.S. I look forward to working together with you for the benefit of your students.